

## Berlin's most beautiful blossoms

- |   |  |  |   |  |  |
|---|--|--|---|--|--|
| <b>01</b> Former border strip<br>S Wollankstraße, S Bornholmer Straße         | <b>05</b> Gärten der Welt (Gardens of the World)<br>U Kienberg (Gärten der Welt) | <b>09</b> Müggelturm<br>S Spindlerfeld, then tram 62 | <b>13</b> Naturpark Schöneberger Südgelände<br>S Priesterweg          | <b>17</b> Pfaueninsel (Peacock Island)<br>S Wannsee, then bus 218                    | <b>21</b> Berliner Dom (Berlin Cathedral)<br>S Hackescher Markt<br>U Klosterstraße |
| <b>02</b> Kollwitz neighbourhood<br>U Senefelder Platz                        | <b>06</b> Volkspark Friedrichshain<br>S Landsberger Allee                        | <b>10</b> Britzer Garten<br>U Alt-Mariendorf         | <b>14</b> Cecilienärten<br>S+U Innsbrucker Platz                      | <b>18</b> Grunewald<br>S Grunewald   | <b>22</b> Monbijoupark<br>S Oranienburger Straße                                   |
| <b>03</b> Zeiss Großplanetarium and Ernst Thälmann Park<br>S Prenzlauer Allee | <b>07</b> Wiener Straße<br>U Görnitzer Park                                      | <b>11</b> Landwehrkanal<br>U Hermannplatz            | <b>15</b> Volkspark Schöneberg-Wilmersdorf<br>U Rathaus Schöneberg    | <b>19</b> Zoo Berlin<br>S+U Zoologischer Garten                                      | <b>23</b> Volkspark Humboldthain<br>S+U Gesundbrunnen                              |
| <b>04</b> Böttzow neighbourhood<br>S Greifswalder Straße                      | <b>08</b> Treptower Park<br>S Treptower Park                                     | <b>12</b> Victoriapark<br>U Mehringdamm              | <b>16</b> Botanischer Garten (Botanic Garden)<br>S Botanischer Garten | <b>20</b> Tiergarten<br>S+U Brandenburger Tor<br>S+U Zoologischer Garten, S Bellevue | <b>24</b> Tegeler See<br>U Alt-Tegel   |

## Did you know ...?

### THE SAKURA CAMPAIGN

In Japan, the cherry blossom – known as 'sakura' – stands for transience, renewal and beauty.

So what's the connection to Berlin?

Very simple – after the fall of the Wall, Japanese broadcaster Asahi TV spontaneously called on its viewers to donate cherry trees for Berlin.

The campaign was supported by 20,000 people in Japan, including many school children who donated their pocket money.

So now several thousand cherry trees are growing at sites where once the Wall divided Berlin.

Today, the delicate pink blossoms are among the loveliest signs of spring in the city.



## What, when, where?

### SPRING BLOSSOM FESTIVALS 2020

#### Britz Park Blossom Festival

3 – 19 April  
Gutspark Britz

#### Perennials Market

4 – 5 April  
Botanischer Garten  
(Botanic Garden)

#### Gardens of the World – Cherry Blossom Festival

19 April  
Gärten der Welt  
(Gardens of the World)

#### Hanami 18th Japanese Cherry Blossom Festival

26 April  
Berlin Wall Trail  
Teltow to Lichterfelde

#### Biesdorf Blossom Festival

21 – 24 May  
Biesdorfer Schlosspark

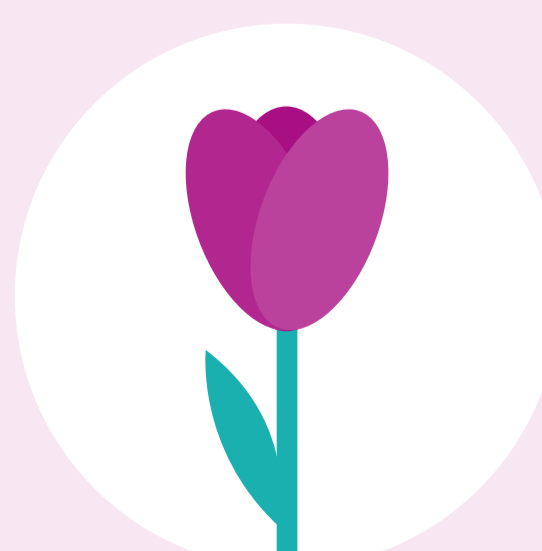
### SPRING BLOSSOMS



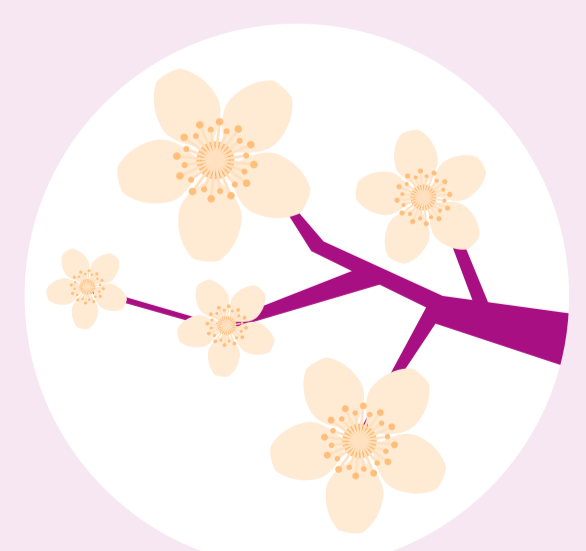
**Cherry**  
March – May



**Lilac**  
April – June



**Tulips**  
April – May



**Apple**  
May